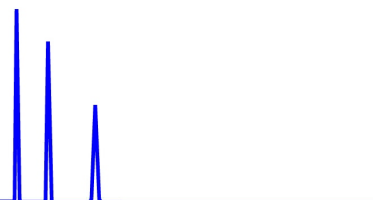




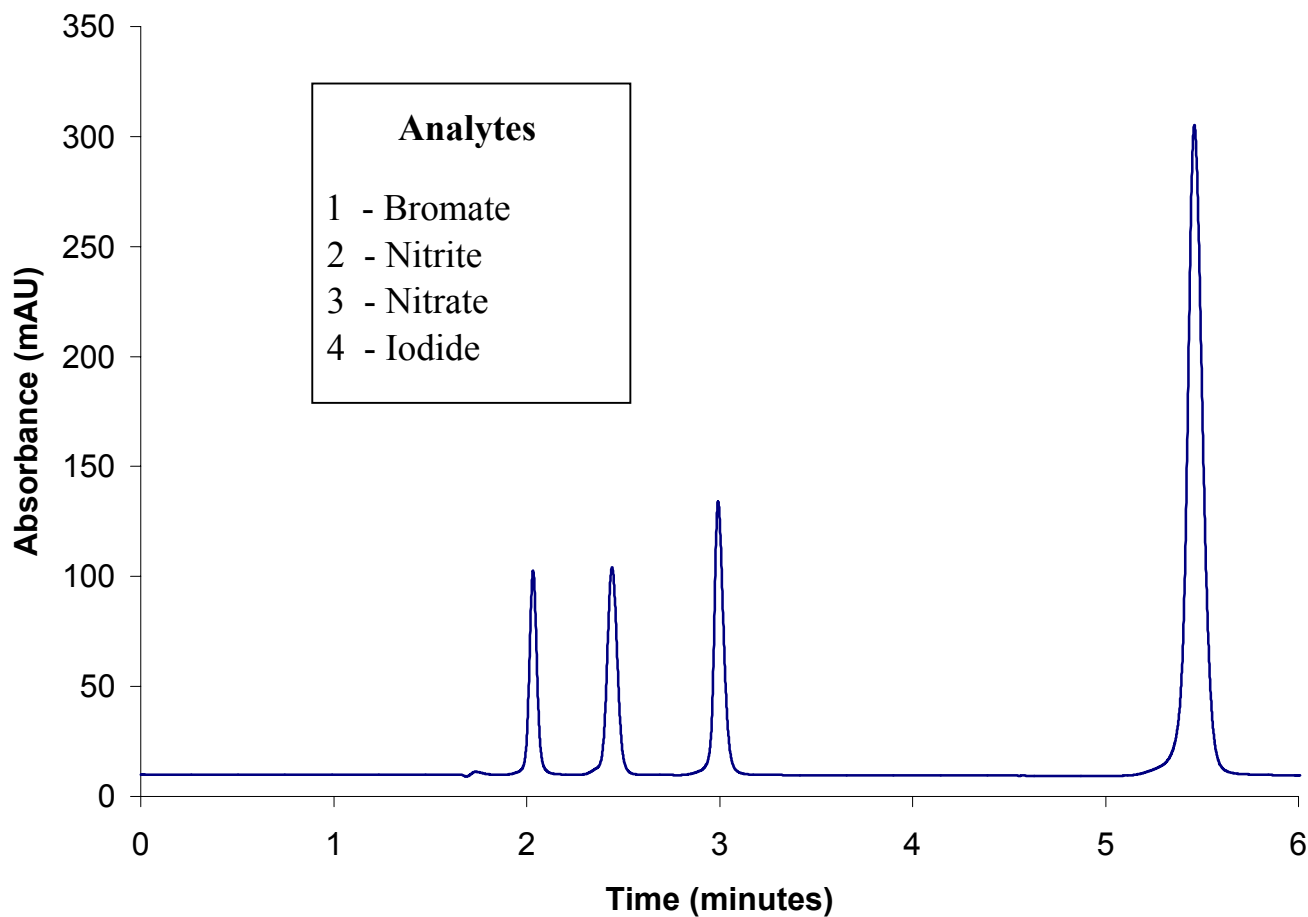
ZirChrom®

Technical
Bulletin #136



... For Peak Performance

Inorganic Anion Separation



Column: ZirChrom®-WAX, 150 mm × 4.6 mm i.d.
 Mobile Phase: 100% A
 A: 50mM sodium phosphate, 75mM NaCl at pH 7.0

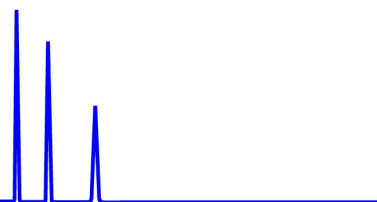
Flow rate: 1.0 mL/min.
 Temperature: 30 °C
 Detection: 240 nm
 Injection: 5µL





ZirChrom®

Technical Bulletin #218

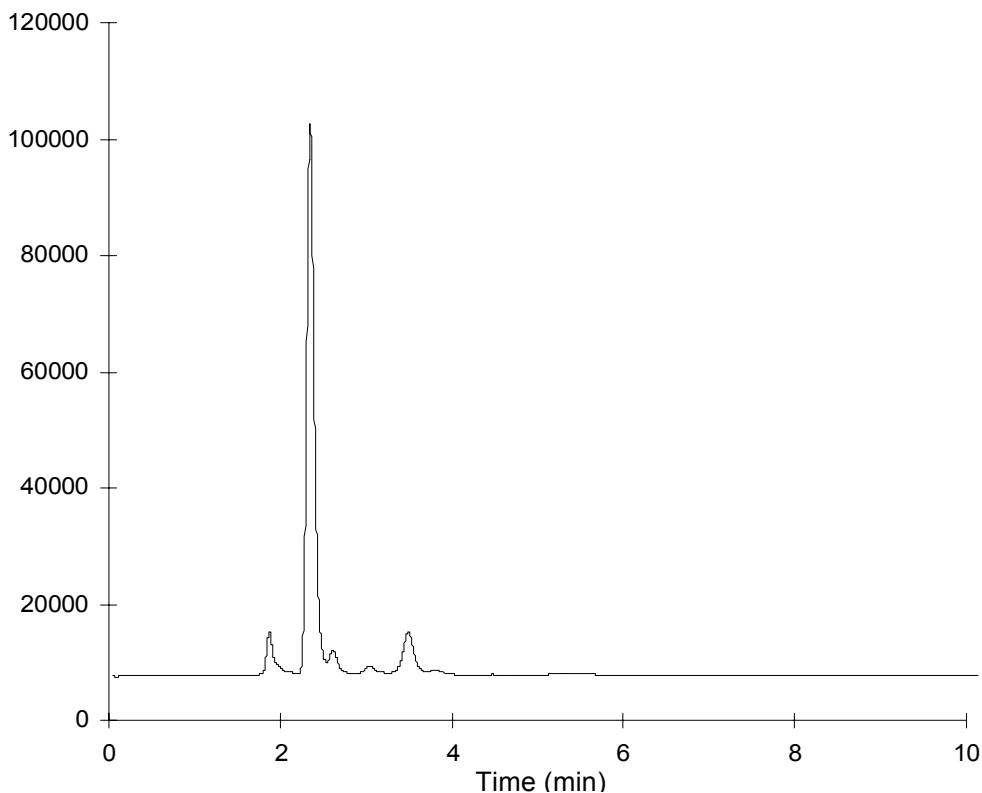


... For Peak Performance

Natural Flavoring Agents on ZirChrom®-WAX

Analytes

Saponins in
the yucca
shidigera
flavoring
extract



LC Conditions

Column: ZirChrom®-WAX, 150 x 4.6 mm

Mobile Phase: 85/15 A/B

A: Acetonitrile

B: Water

Flow rate: 2.0 mL/min.

Temperature: ambient

Detection: ELSD

