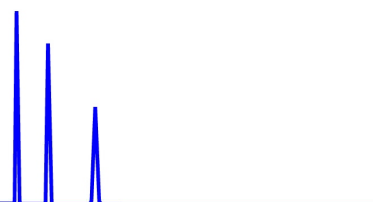




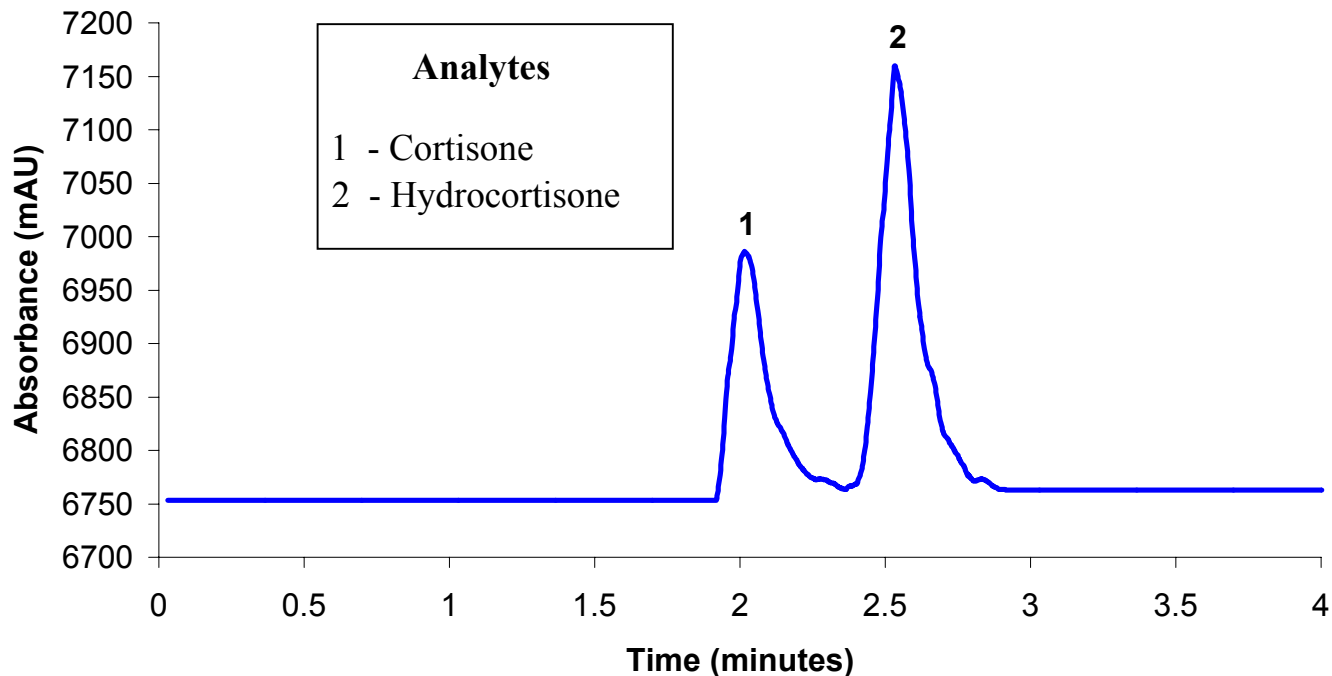
ZirChrom®

Technical
Bulletin #142



... For Peak Performance

Steroids Separation on ZirChrom®-PHASE



LC Conditions

Column: ZirChrom®-PHASE, 150 mm x 4.6 mm i.d.

Mobile Phase: 67/33 A/B

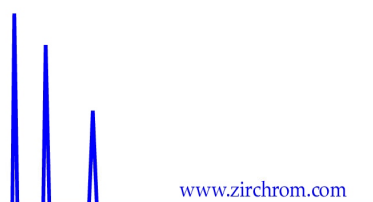
A: Hexane

B: Acetone

Flow rate: 1.0 mL/min.

Temperature: Ambient

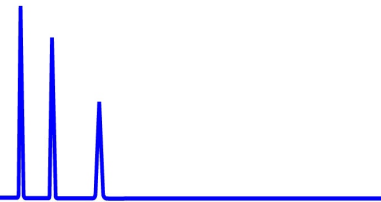
Detection: ELSD Detection





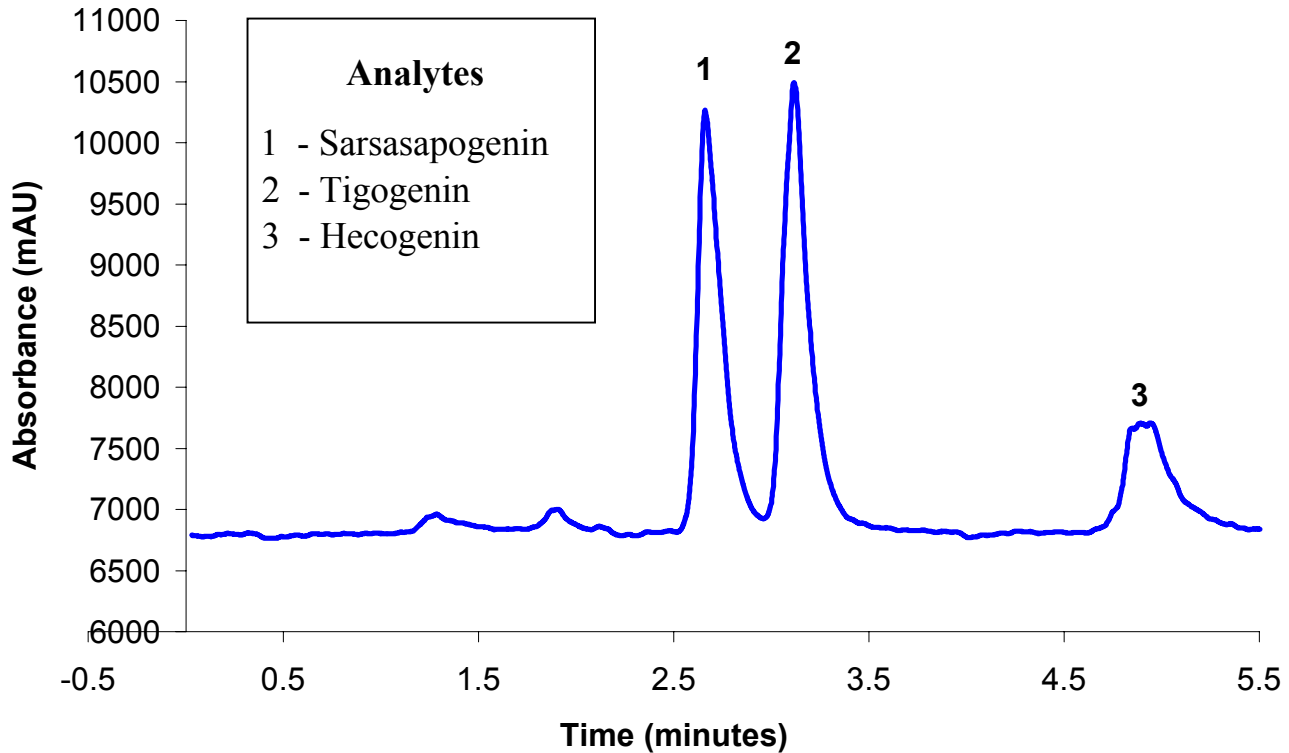
ZirChrom®

Technical
Bulletin #143



... For Peak Performance

Plant Genins Separation on ZirChrom®-PHASE



LC Conditions

Column: ZirChrom®-PHASE, 150 x 4.6 mm
 Mobile Phase: 67/33 A/B
 A: Hexane
 B: Acetone

Flow rate: 1.0 ml/min.
 Temperature: Ambient
 Detection: ELSD Detector

