



Xtimate[®] C8 300Å

Introducing the new HPLC Column

Welch Materials launched a new Xtimate[®] C8 300Å HPLC column for biopharmaceutical customers to detect protein samples in a high pH environment, and to provide our customers with a column with high column efficiency & long life.

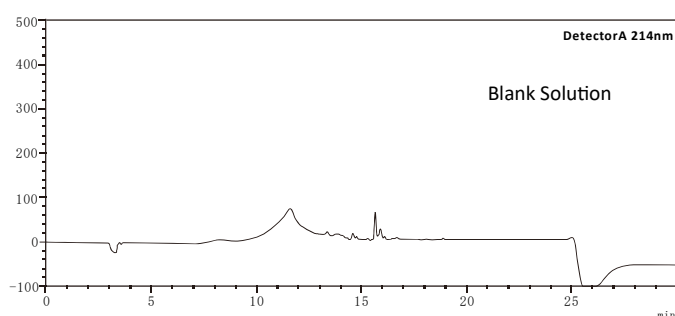
Features

- Wide pH range: 1.0-12.5.
- Excellent stability for high pH applications.
- Excellent peak shape for the determination of strong basic compounds.

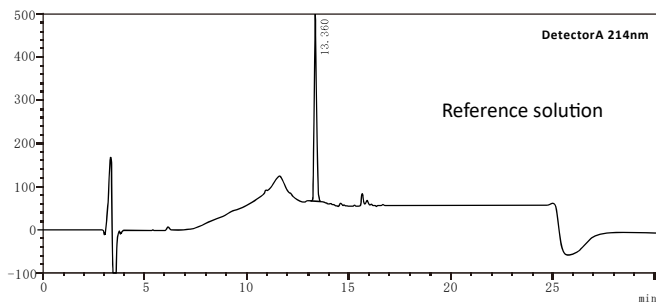
Bonded phase	Feature Description	Particle size μm	Surface area m^2/g	Carbon loads %	PH stability
C8	Analysis, Preparative Alkaline Macromolecular protein samples	5	100	5.00	1-12.5

Application

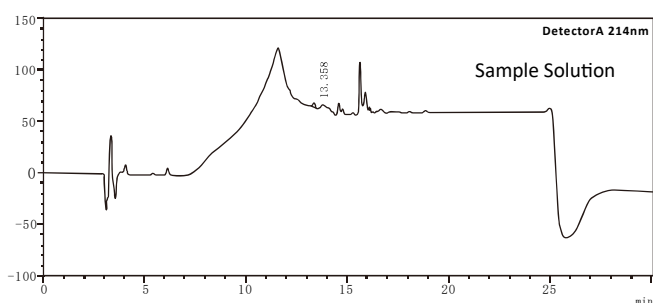
Xtimate[®] C8 300Å application case of interleukin 2



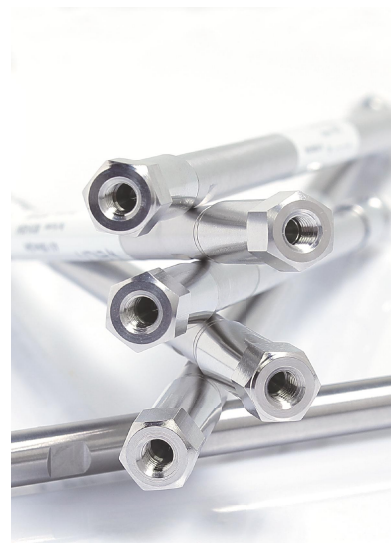
Column:	Xtimate [®] C8 300Å(4.6×250mm,5 μm)
Mobile Phase:	Phase A: 0.1% Trifluoroacetic acid aqueous solution Phase B: 0.1% Trifluoroacetic acid in acetonitrile
Detection:	214nm
Temperature:	30°C
Flow Rate:	1.0ml/min
Injection Volume:	10 μl



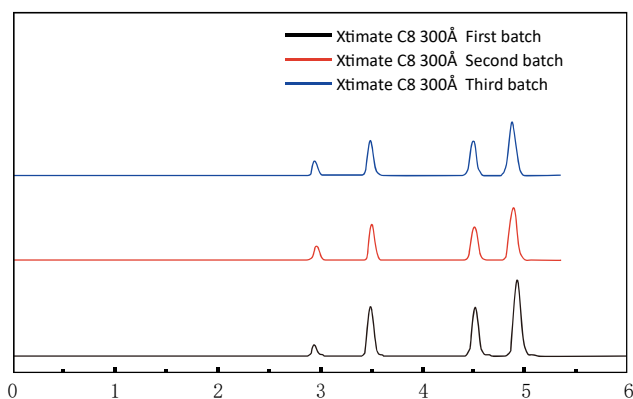
P/N	RT	Area	Height	Area%	Plate No (USP)	Compound
1	13.360	3206759	437905	100.000	69712	interleukin2
Total		3206759	437905	100.000		



P/N	RT	Area	Height	Area%	Plate No (USP)	Compound
1	13.358	24247	4111	100.000	93524	Interleukin 2
Total		24247	4111	100.000		



Test Results of batch-to-batch reproducibility of Xtimate®C8 300Å



Ordering Information

Specification	P/N
4.6×250mm, 5µm	00102-23043
4.6×150mm, 5µm	00102-23041