

CONCISE SEPARATIONS

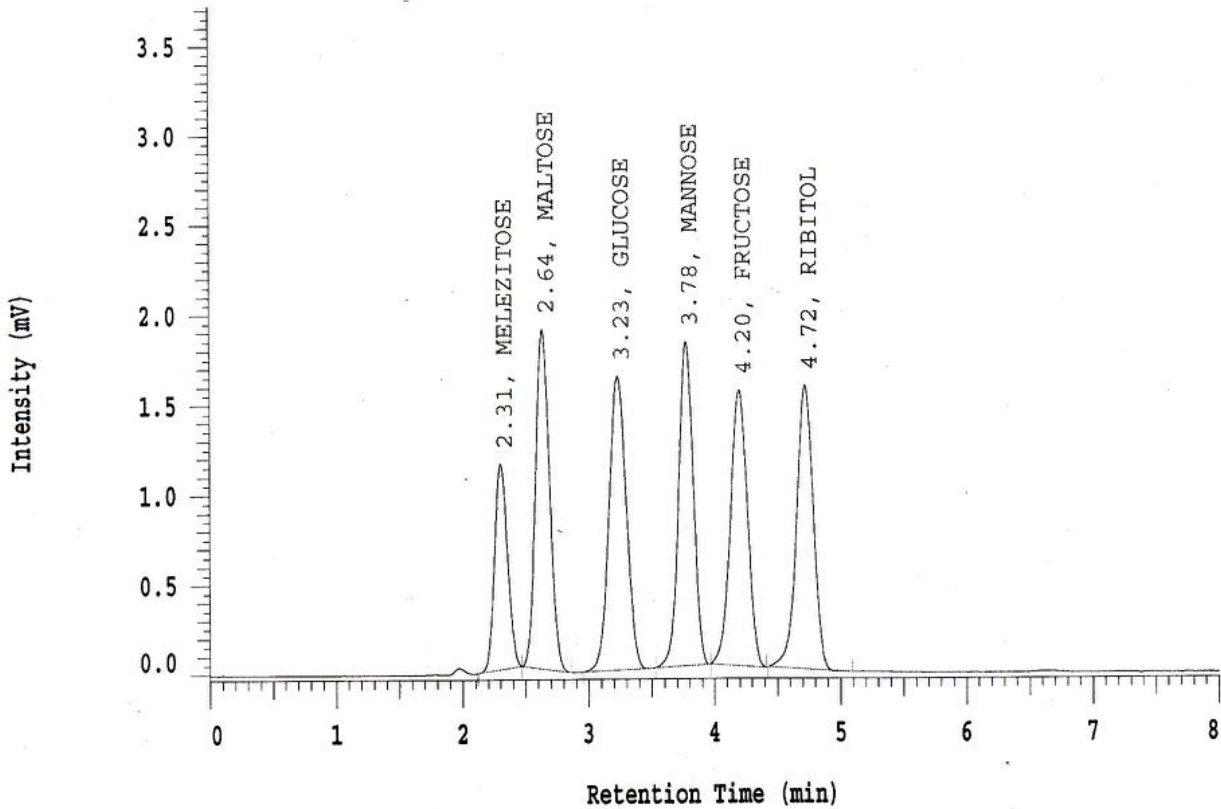
Coregel CHO 87C

P/N: CHO-99-9860

Processing Method: COR87C
Sample Name: Test Mixture
Ca2+ Form: Fast Analysis
Column S/N:12915712

Volume: 20 uL
Length: 300 mm
ID: 7.8 mm
Polymer Lot: 123-38

Refractive Index



System 2

Solvent A: DI H2O

Pump A Pressure Profile: Max: 469.5 Min: 441.0

Flow Rate: 0.6 ml/min

Temperature: 85C

RT (min)	Name	k'	Asym	N (EUP)	Res (EUP)	Alpha	S/N	Noise (uV)
2.31	MELEZITOSE	0.99	1.09	2294	---	---	---	---
2.64	MALTOSE	1.27	1.04	2656	1.66	1.29	---	---
3.23	GLUCOSE	1.79	1.00	2610	2.61	1.40	---	---
3.78	MANNOSE	2.26	0.96	5040	2.33	1.26	---	---
4.20	FRUCTOSE	2.62	0.92	4568	1.83	1.16	---	---
4.72	RIBITOL	3.07	0.89	6140	2.14	1.17	---	---