

CONCISE SEPARATIONS

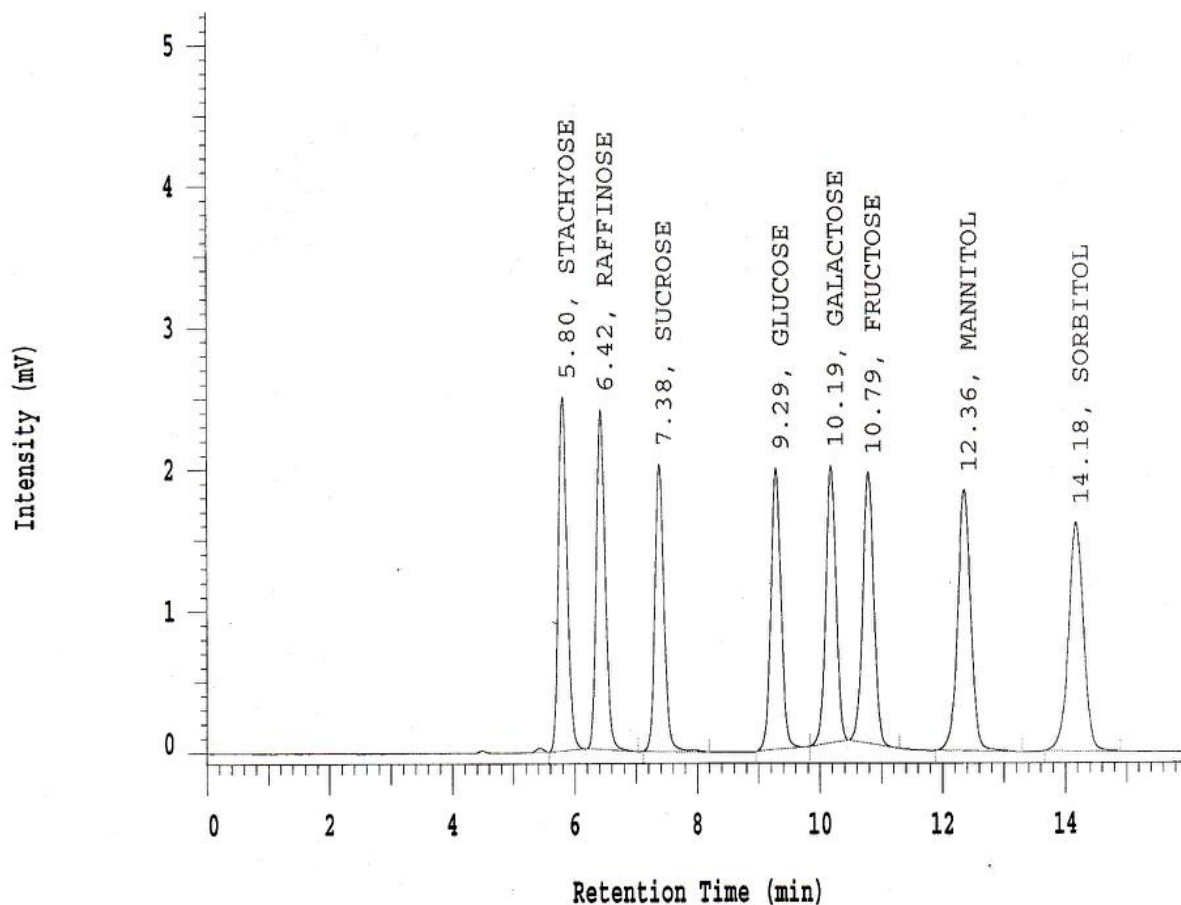
Coregel CHO 620

P/N: CHO-99-9753

Processing Method: CHO620
Sample Name: Test Mixture
Ca2+ Form: Sugar & Sugar Alcohols
Column S/N: 12922712

Volume: 20 uL
Length: 300 mm
ID: 6.5 mm
Polymer Lot: 132-4623

Refractive Index



Solvent A: DI H2O

Pump A Pressure Profile: Max: 569.0 Min: 554.8

Flow Rate: 0.5 ml/min

Temperature: 90C

RT (min)	Name	k'	Asym	N (EUP)	Res (EUP)	Alpha	S/N	Noise (uV)
5.80	STACHYOSE	4.00	1.15	8352	---	---	---	---
6.42	RAFFINOSE	4.53	1.11	9872	2.42	1.13	---	---
7.38	SUCROSE	5.36	1.08	12998	3.70	1.18	---	---
9.29	GLUCOSE	7.01	1.02	16134	6.93	1.31	---	---
10.19	GALACTOSE	7.78	0.97	18034	3.02	1.11	---	---
10.79	FRUCTOSE	8.30	0.94	17341	1.92	1.07	---	---
12.36	MANNITOL	9.66	0.95	17192	4.44	1.16	---	---
14.18	SORBITOL	11.22	0.94	17103	4.49	1.16	---	---