

# CONCISE SEPARATIONS

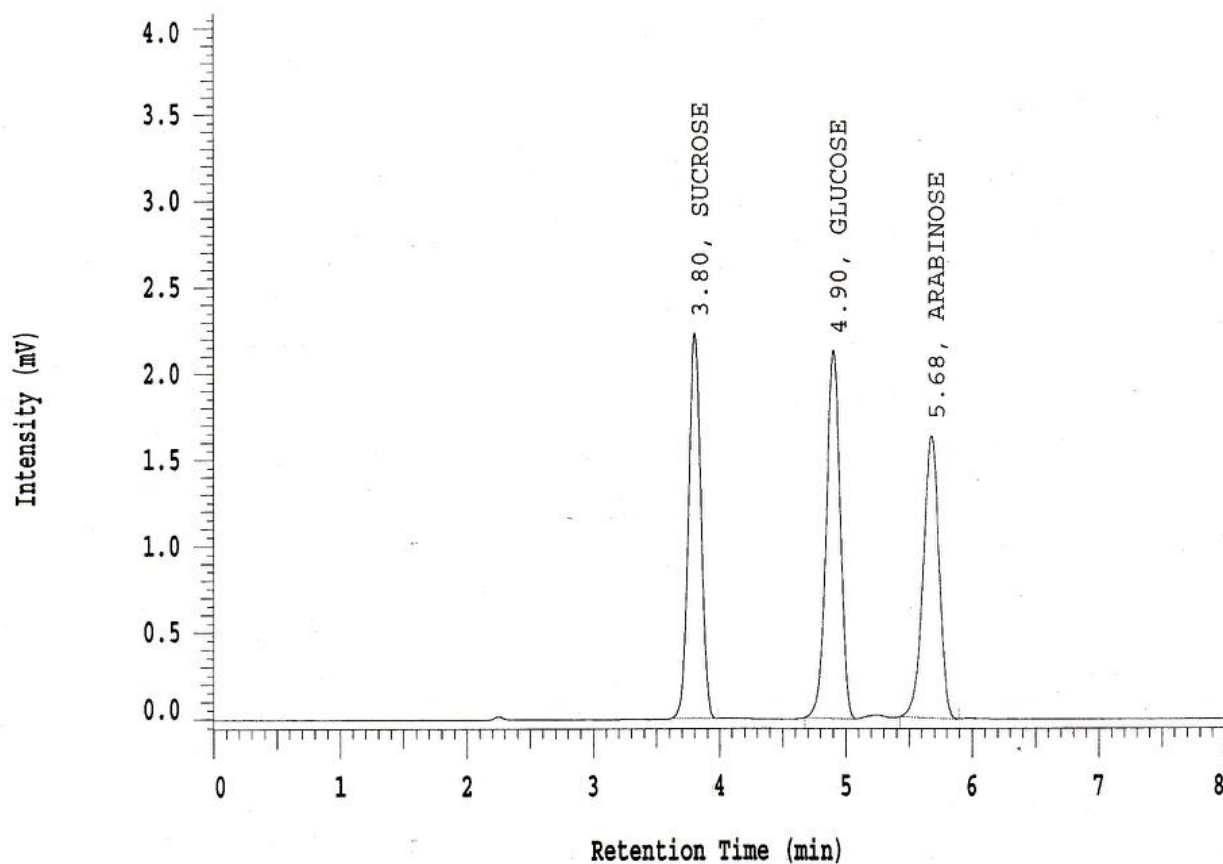
## Coregel CHO 611OH

P/N: CHO-99-7752

Processing Method: CHO611OH  
Sample Name: Test Mixture  
Na+ Form: Fast Analysis  
Column S/N:12515111

Volume: 10 uL  
Length: 150 mm  
ID: 6.5 mm  
Polymer Lot: 175-3

### Refractive Index



Solvent A: DI H2O

Pump A Pressure Profile: Max: 398.3 Min: 384.1

Flow Rate: 0.5 ml/min

Temperature: 90C

RT (min)	Name	k'	Asym	N (EUP)	Res (EUP)	Alpha	S/N	Noise (uV)
3.80	SUCROSE	2.28	0.99	7239	---	---	---	---
4.90	GLUCOSE	3.22	0.95	9499	5.77	1.41	---	---
5.68	ARABINOSE	3.89	0.91	9616	3.59	1.21	---	---