

CONCISE SEPARATIONS

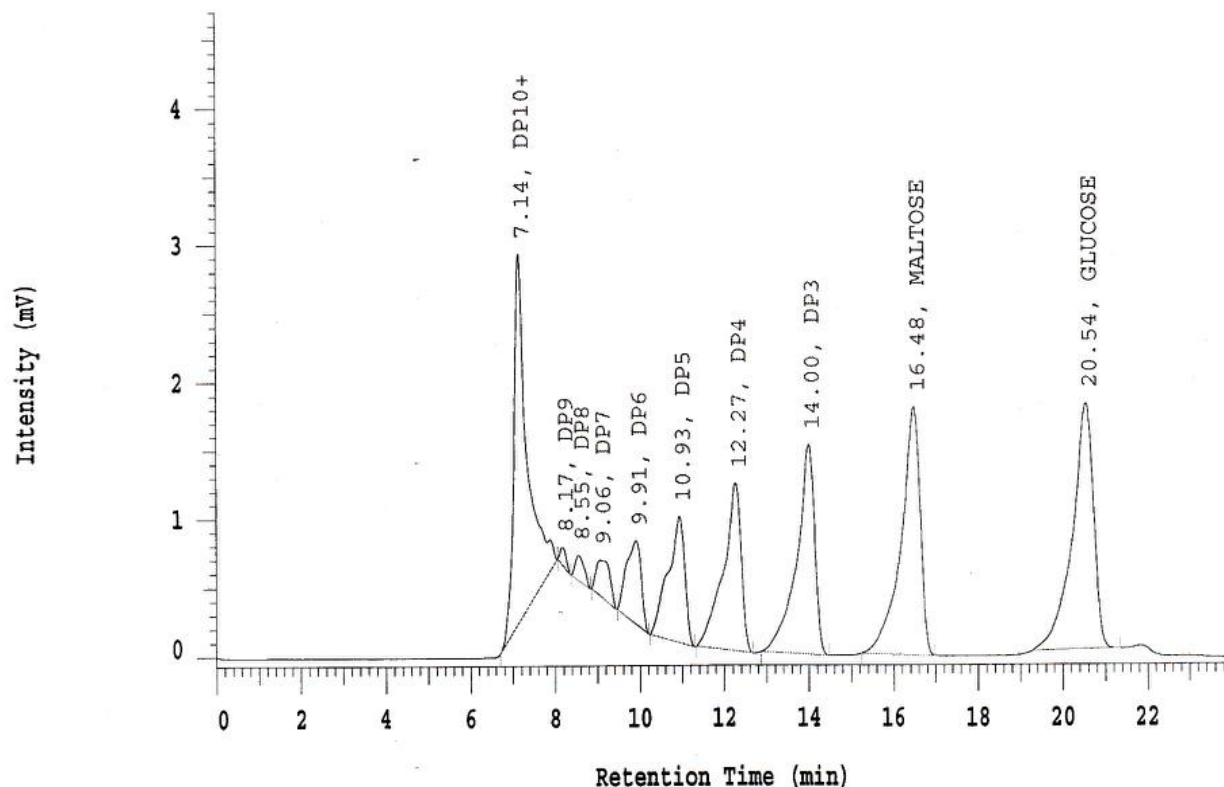
Coregel CHO 411

P/N: CHO-99-9850

Processing Method: CHO411
 Sample Name: Test Mixture
 Na+ Form: Oligosaccharides
 Column S/N: 06416525

Volume: 20 uL
 Length: 300 mm
 ID: 7.8 mm
 Lot: 056-153

Refractive Index



Solvent A: DI H2O

Flow Rate: 0.4 ml/min

Temperature: 85C

Pump A Pressure Profile: Max: 227.6

Min: 213.4

RT (min)	Name	k'	Asym	N (EUP)	Res (EUP)	Alpha	S/N	Noise (uV)
7.14	DP10+	5.16	---	4343	---	---	---	---
8.17	DP9	6.04	---	14185	2.91	1.17	---	---
8.55	DP8	6.37	---	7256	1.12	1.05	---	---
9.06	DP7	6.81	---	3260	0.98	1.07	---	---
9.91	DP6	7.54	---	2799	1.23	1.11	---	---
10.93	DP5	8.43	---	2677	1.28	1.12	---	---
12.27	DP4	9.57	0.66	5376	1.76	1.14	---	---
14.00	DP3	11.07	0.67	7063	2.59	1.16	---	---
16.48	MALTOSE	13.21	0.68	7951	3.53	1.19	---	---
20.54	GLUCOSE	16.71	0.73	9876	5.18	1.27	---	---